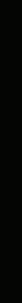


**For Bookings**  
**86044 06044**



**TRUMP**  
**TOWERS**  
DELHI NCR



FLOOR PLANS  
&  
SPECIFICATIONS



# LOCATION MAP



\* Map not to scale. Indicative only.



OTHERS LAND



T1 & T2 - Trump Tower Delhi NCR

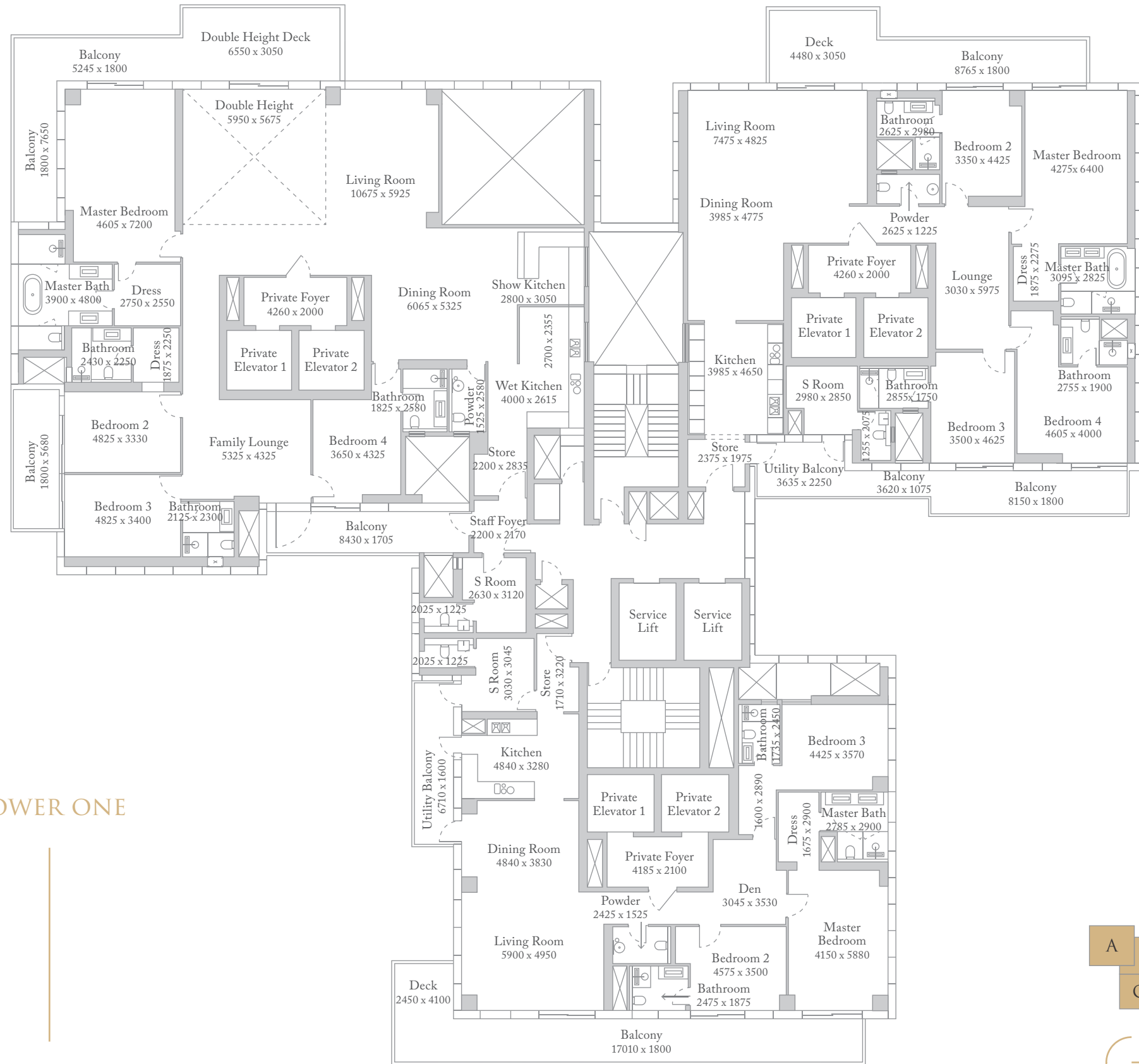
- (a) Entry/Exit
- (b) Water Garden
- (c) Arrival Plaza
- (d) Entrance Lobby
- (e) Kids Play Area
- (f) Secondary Entry/Exit
- (g) Sunset Mirror Pool
- (h) Glass Covered Heated Pool
- (i) Community Building-Trump Club
- (j) Services - HSD Yard
- (k) Services - DG Cooling Tower
- (l) Residential Building C1-11 (G+20)
- (m) Primary/ Nursery School

\*Refer Disclaimer  
This is an indicative master plan

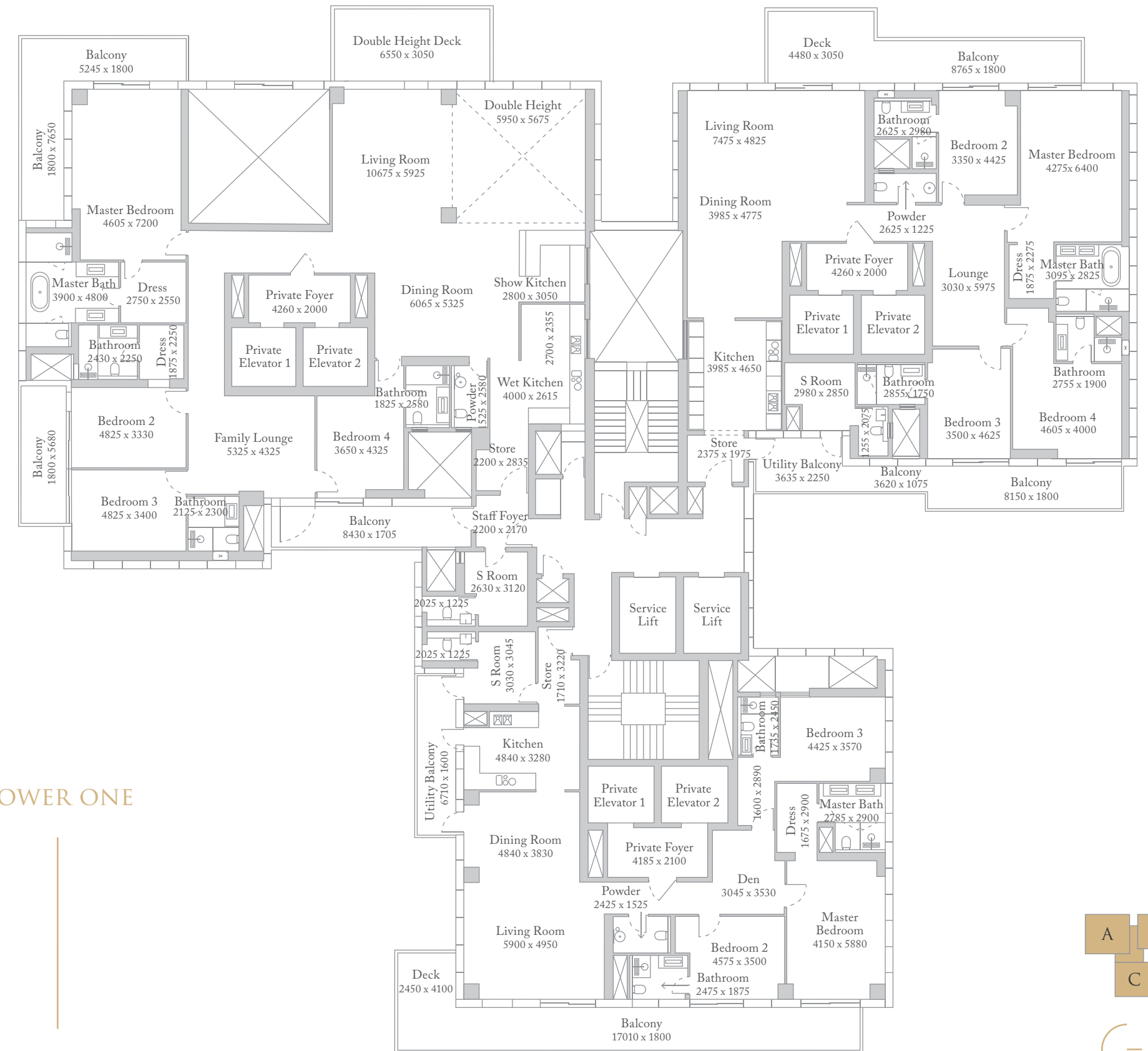
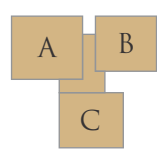
## MASTER PLAN



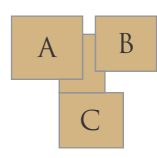


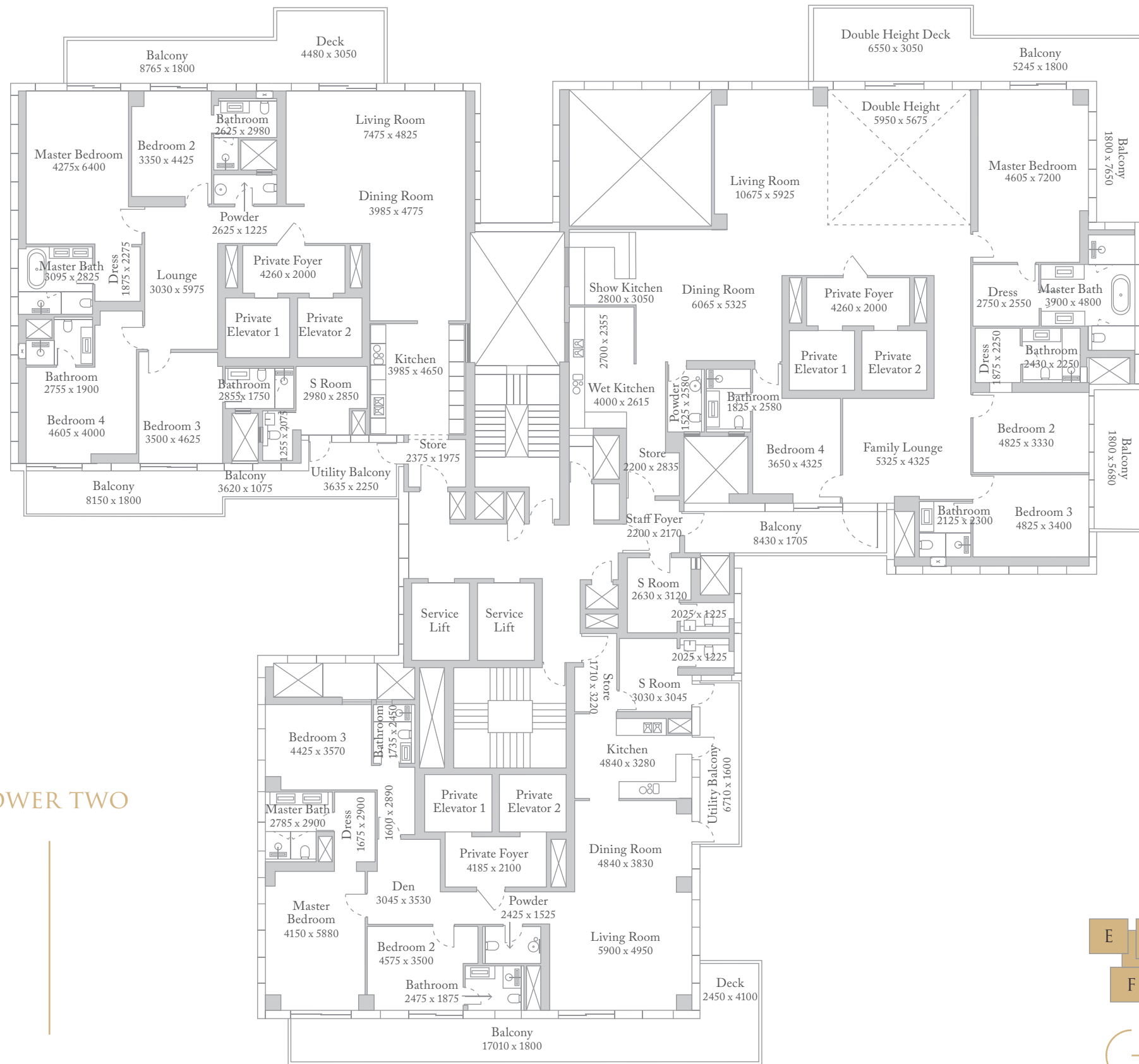


TOWER ONE

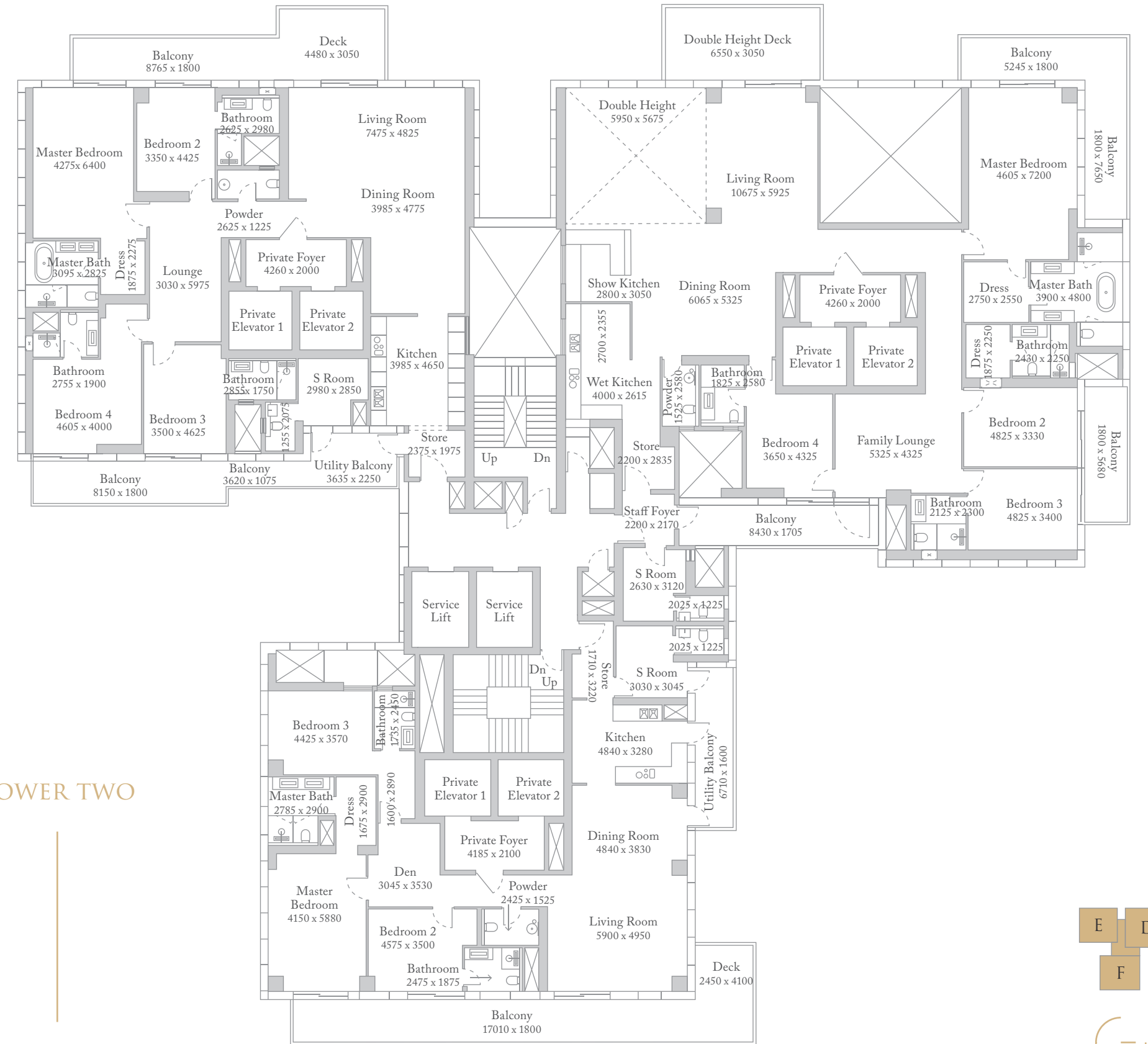
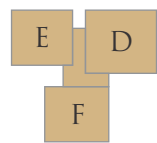


TOWER ONE

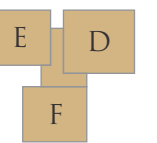




TOWER TWO



TOWER TWO



4BHK + LOUNGE  
DOUBLE HEIGHT

TYPE I

**Carpet Area**  
352.75 Sq. m. / 3,797 Sq. ft.

**Private Usable Area**  
472.53 Sq. m. / 5,086 Sq. ft.

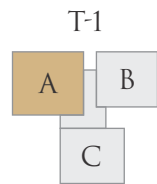
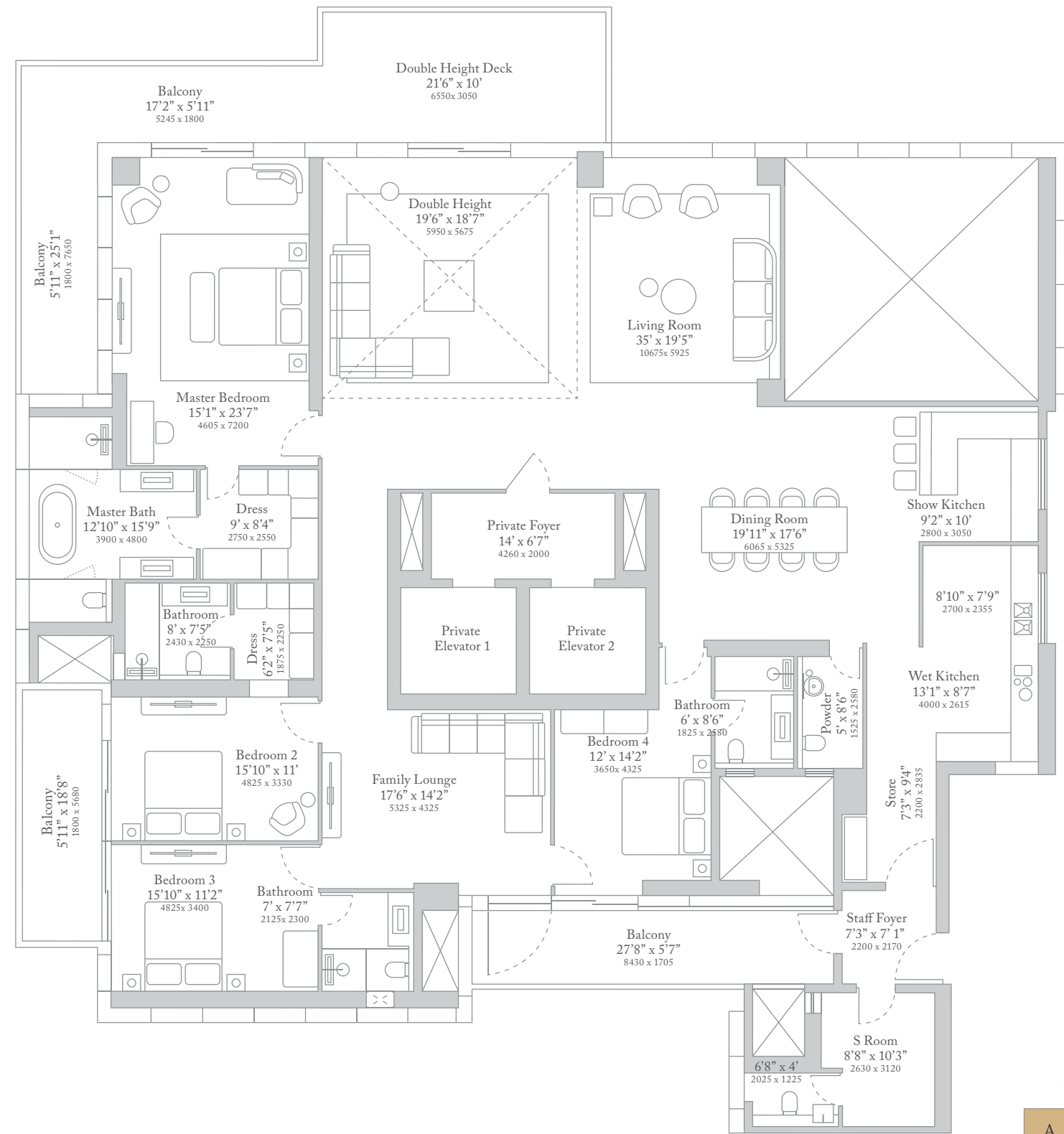
**Super Built Area**  
562.06 Sq. m. / 6,050 Sq. ft.

**Common Features**

- Superior 3.75m floor to floor height
- Edge to edge curtain glass façade offering clear & fantastic views
- Separate provision for service entry and private entry
- Air conditioned kitchen with covered storage space/laundry area
- Extended balconies with party deck - for lively outdoor experience
- Private areas segregated from living areas

**Unit Features**

- Elevators opening directly into your private entry foyer
- Over 1200 sq.ft. of living, dining and entertainment space
- Grand living room with 24' high ceilings in every apartment
- Over 200 sq.ft. of double height deck with mist cooling
- Over 600 sq.ft. master suite plus 200 sq.ft. wrap around balcony
- Lavish five fixture master bath with floor to ceiling glazing
- Separate show kitchen to display your culinary (or mixology) skills
- Large family lounge with attached terrace



4BHK + LOUNGE  
DOUBLE HEIGHT

TYPE II

**Carpet Area**  
350.75 Sq. m. / 3,775 Sq. ft.

**Private Usable Area**  
472.81 Sq. m. / 5,089 Sq. ft.

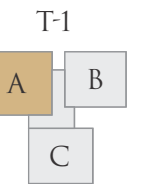
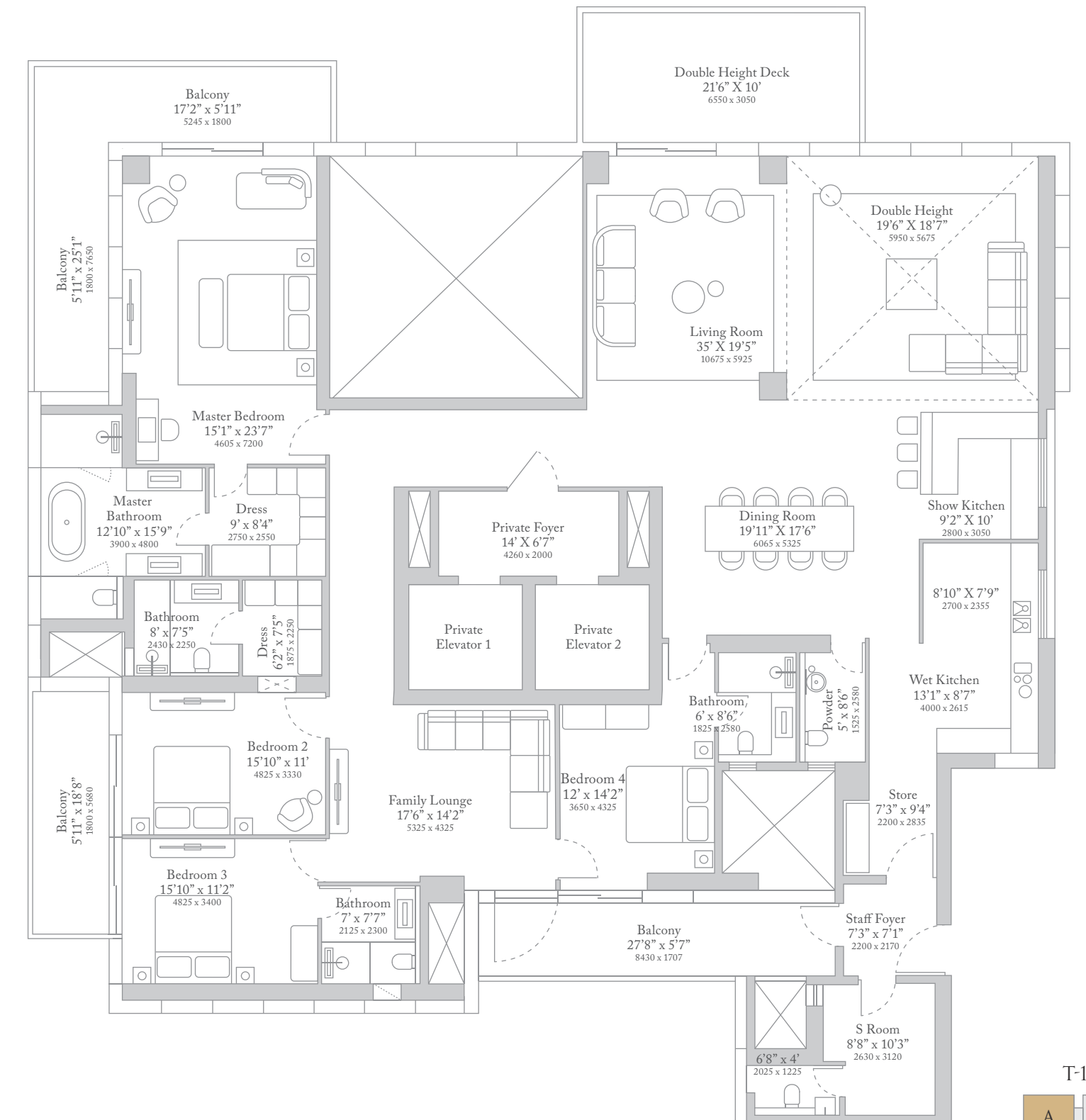
**Super Built Area**  
562.06 Sq. m. / 6,050 Sq. ft.

**Common Features**

- Superior 3.75m floor to floor height
- Edge to edge curtain glass façade offering clear & fantastic views
- Separate provision for service entry and private entry
- Air conditioned kitchen with covered storage space/laundry area
- Extended balconies with party deck - for lively outdoor experience
- Private areas segregated from living areas

**Unit Features**

- Elevators opening directly into your private entry foyer
- Over 1200 sq.ft. of living, dining and entertainment space
- Grand living room with 24' high ceilings in every apartment
- Over 200 sq.ft. of double height deck with mist cooling
- Over 600 sq.ft. master suite plus 200 sq.ft. wrap around balcony
- Lavish five fixture master bath with floor to ceiling glazing
- Separate show kitchen to display your culinary (or mixology) skills
- Large family lounge with attached terrace



4BHK + LOUNGE

**Carpet Area**  
263.86 Sq. m. / 2,840 Sq. ft.

**Private Usable Area**  
358.76 Sq. m. / 3,862 Sq. ft.

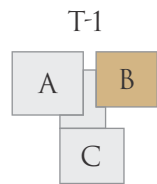
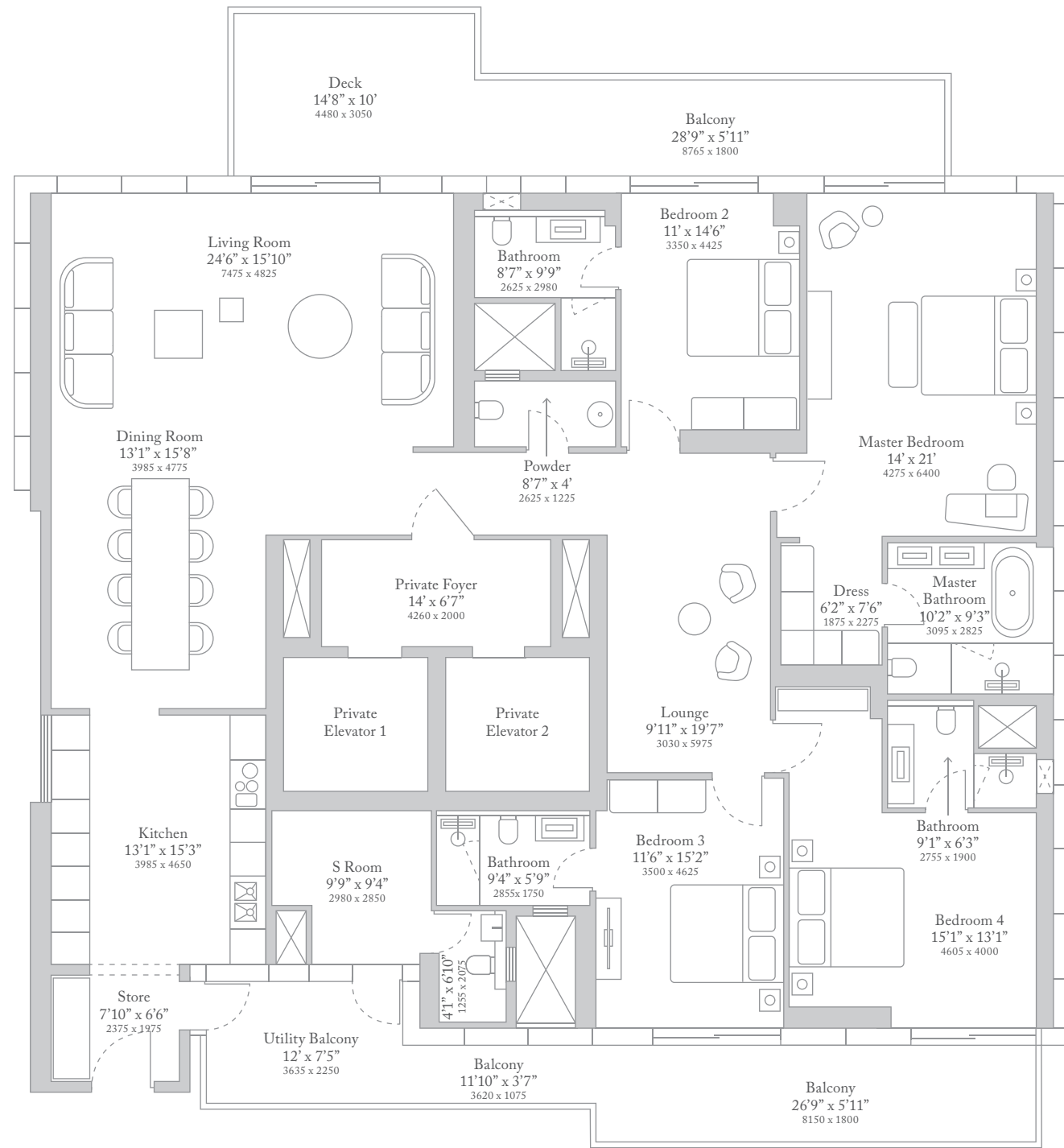
**Super Built Area**  
422.71 Sq. m. / 4,550 Sq. ft.

**Common Features**

- Superior 3.75m floor to floor height
- Edge to edge curtain glass façade offering clear & fantastic views
- Separate provision for service entry and private entry
- Air conditioned kitchen with covered storage space/laundry area
- Extended balconies with party deck - for lively outdoor experience
- Private areas segregated from living areas

**Unit Features**

- Elevators opening directly into your private entry foyer
- Over 800 sq. ft. of living, dining and entertainment space
- Over 150 sq.ft. of deck with mist cooling
- Private areas segregated from living areas
- Lavish five fixture master bath with floor to ceiling glazing



3BHK

**Carpet Area**  
214.43 Sq. m. / 2,308 Sq. ft.

**Private Usable Area**  
290.24 Sq. m. / 3,124 Sq. ft.

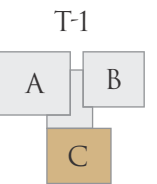
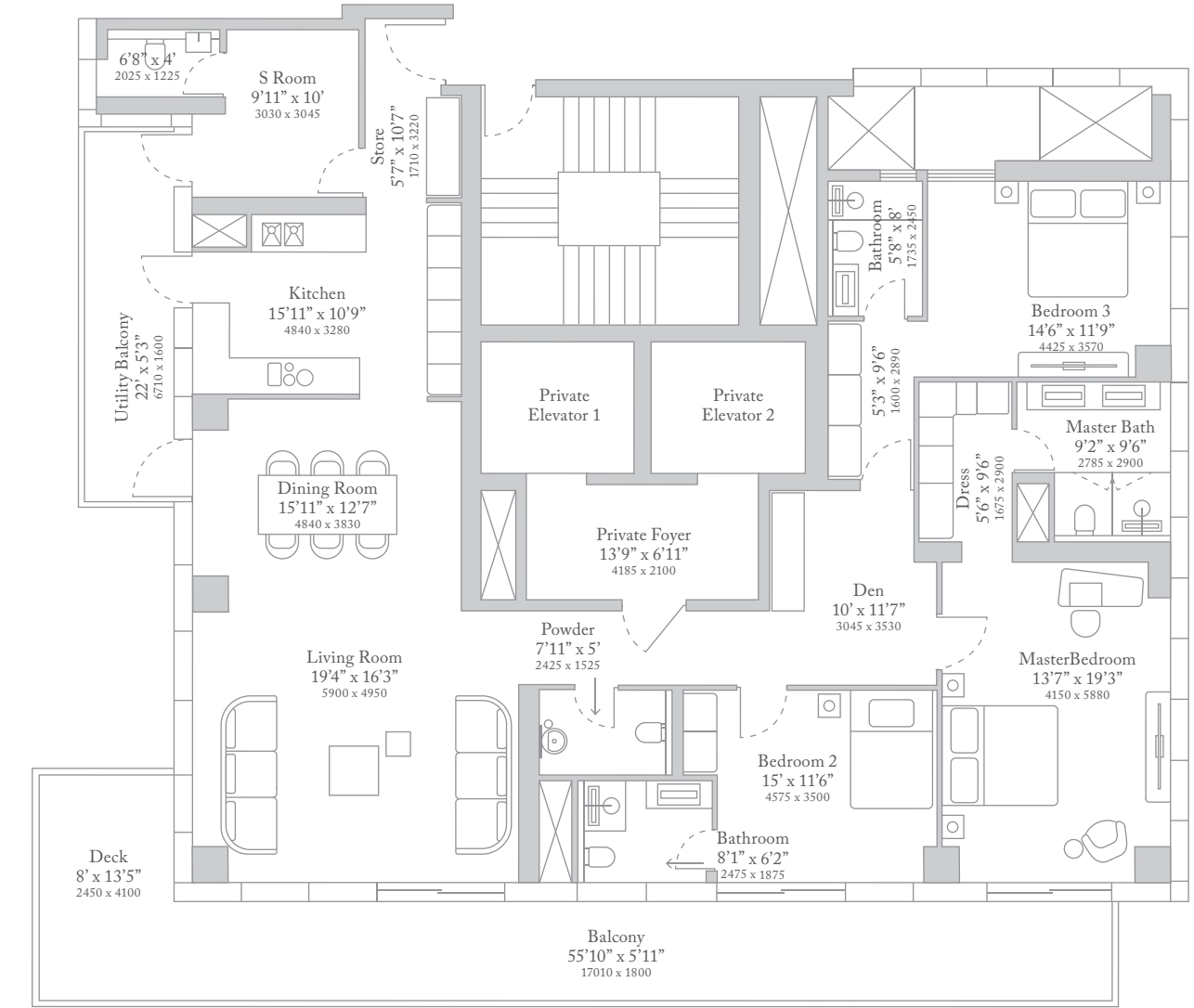
**Super Built Area**  
327.48 Sq. m. / 3,525 Sq. ft.

**Common Features**

- Superior 3.75m floor to floor height
- Edge to edge curtain glass façade offering clear & fantastic views
- Separate provision for service entry and private entry
- Air conditioned kitchen with covered storage space/laundry area
- Extended balconies with party deck - for lively outdoor experience
- Private areas segregated from living areas

**Unit Features**

- Elevators opening directly into your private entry foyer
- Over 600 sq.ft. of living, dining and entertainment space
- Over 100 sq.ft. of deck with mist cooling





4BHK + LOUNGE  
DOUBLE HEIGHT

TYPE I

**Carpet Area**  
352.75 Sq. m. / 3,797 Sq. ft.

**Private Usable Area**  
472.53 Sq. m. / 5,086 Sq. ft.

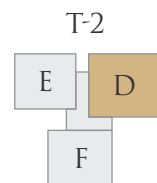
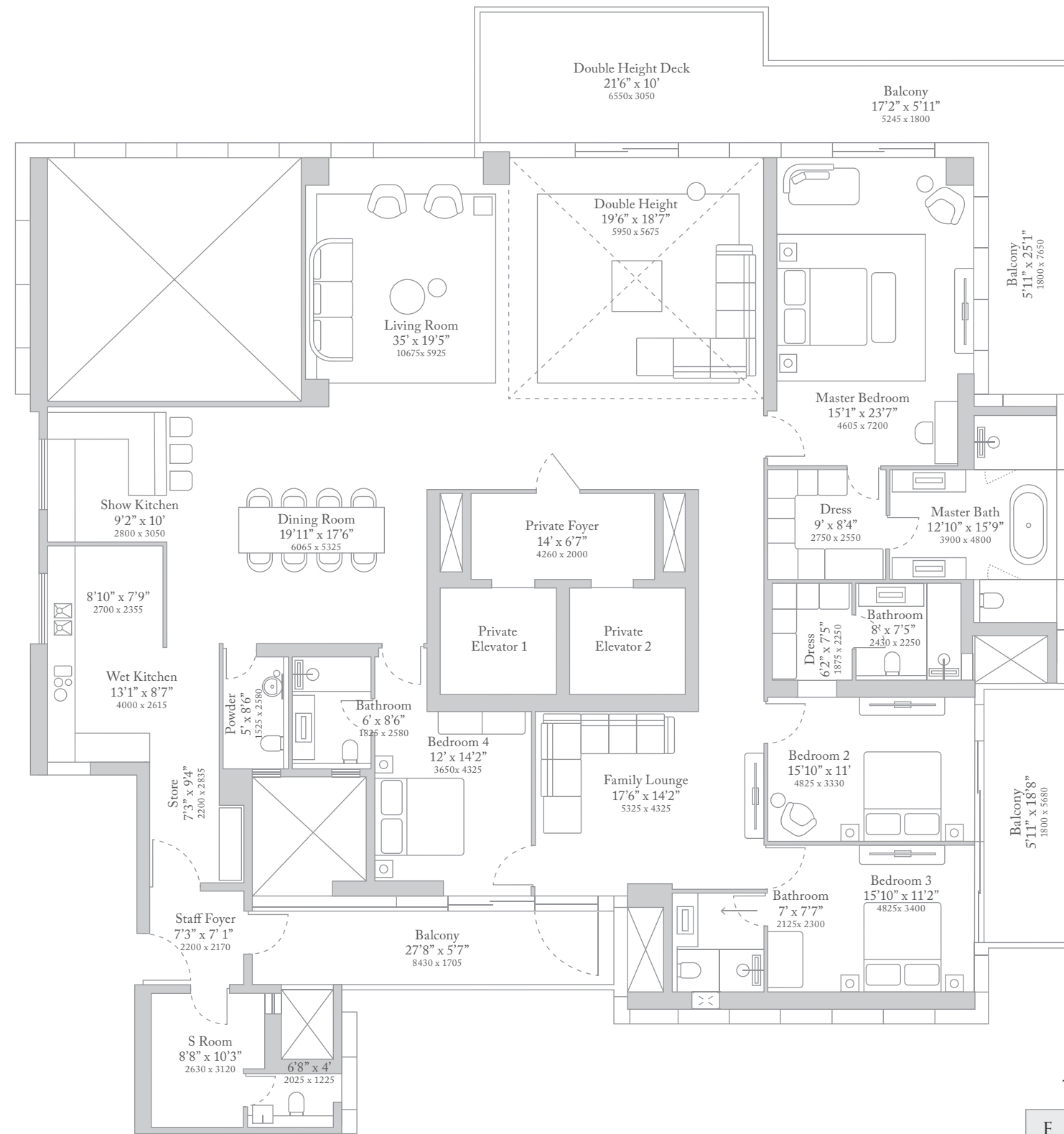
**Super Built Area**  
562.06 Sq. m. / 6,050 Sq. ft.

**Common Features**

- Superior 3.75m floor to floor height
- Edge to edge curtain glass façade offering clear & fantastic views
- Separate provision for service entry and private entry
- Air conditioned kitchen with covered storage space/laundry area
- Extended balconies with party deck - for lively outdoor experience
- Private areas segregated from living areas

**Unit Features**

- Elevators opening directly into your private entry foyer
- Over 1200 sq.ft. of living, dining and entertainment space
- Grand living room with 24' high ceilings in every apartment
- Over 200 sq.ft. of double height deck with mist cooling
- Over 600 sq.ft. master suite plus 200 sq.ft. wrap around balcony
- Lavish five fixture master bath with floor to ceiling glazing
- Separate show kitchen to display your culinary (or mixology) skills
- Large family lounge with attached terrace



4BHK + LOUNGE  
DOUBLE HEIGHT

TYPE II

**Carpet Area**  
350.75 Sq. m. / 3,775 Sq. ft.

**Private Usable Area**  
472.81 Sq. m. / 5,089 Sq. ft.

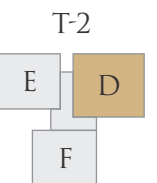
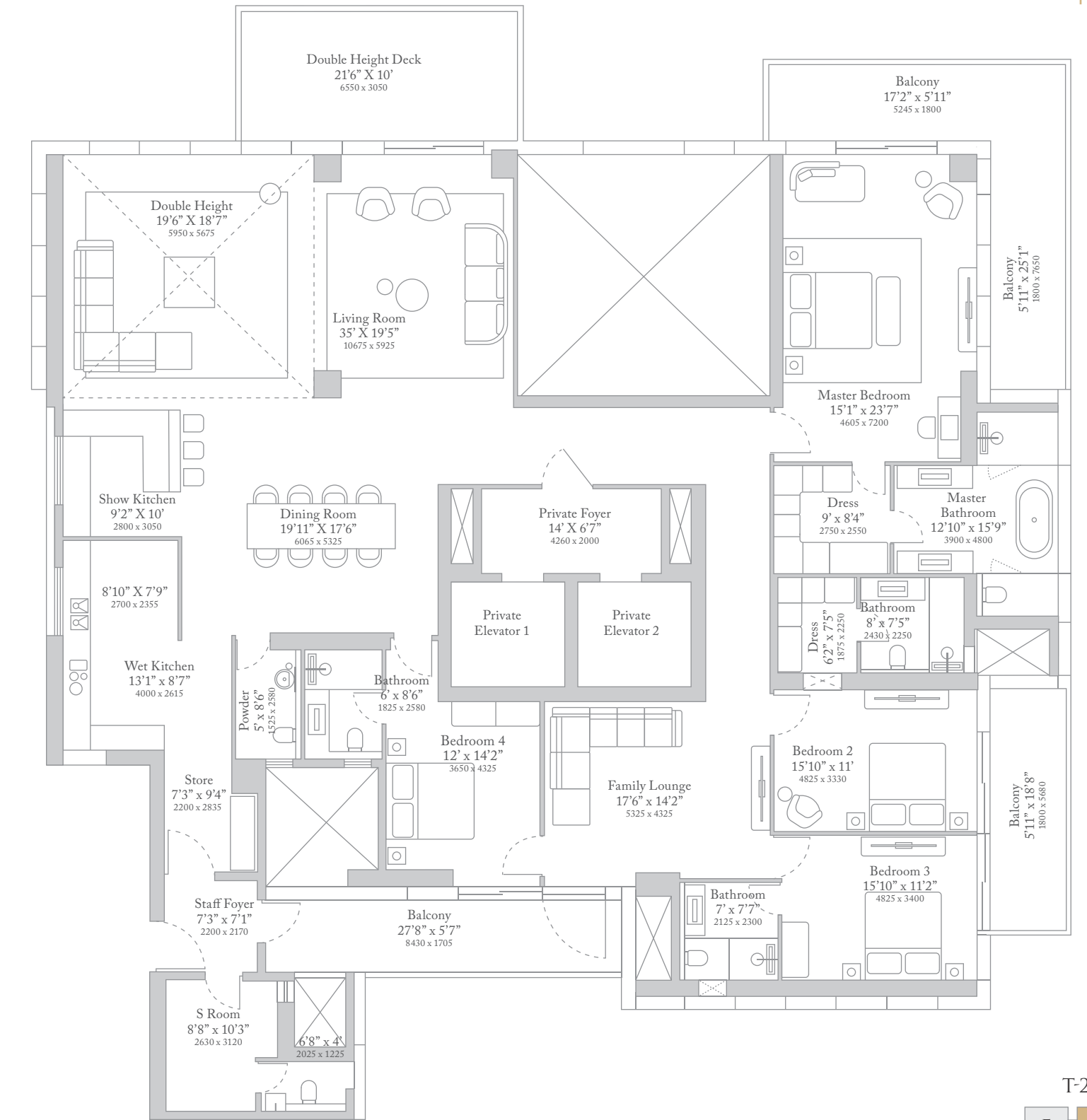
**Super Built Area**  
562.06 Sq. m. / 6,050 Sq. ft.

**Common Features**

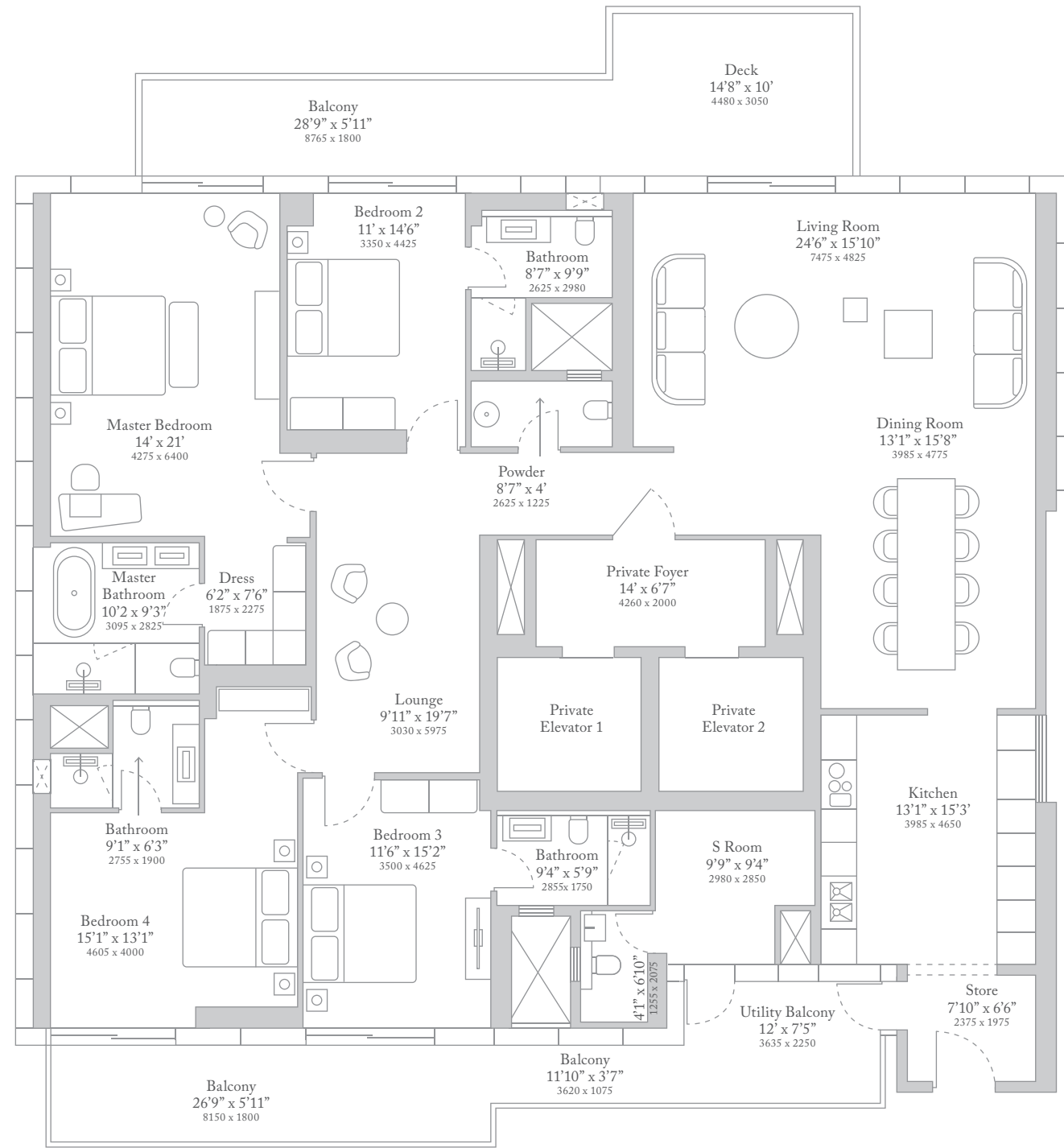
- Superior 3.75m floor to floor height
- Edge to edge curtain glass façade offering clear & fantastic views
- Separate provision for service entry and private entry
- Air conditioned kitchen with covered storage space/laundry area
- Extended balconies with party deck - for lively outdoor experience
- Private areas segregated from living areas

**Unit Features**

- Elevators opening directly into your private entry foyer
- Over 1200 sq.ft. of living, dining and entertainment space
- Grand living room with 24' high ceilings in every apartment
- Over 200 sq.ft. of double height deck with mist cooling
- Over 600 sq.ft. master suite plus 200 sq.ft. wrap around balcony
- Lavish five fixture master bath with floor to ceiling glazing
- Separate show kitchen to display your culinary (or mixology) skills
- Large family lounge with attached terrace



4BHK + LOUNGE



**Carpet Area**  
263.86 Sq. m. / 2,840 Sq. ft.

**Private Usable Area**  
358.76 Sq. m. / 3,862 Sq. ft.

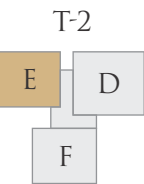
**Super Built Area**  
422.71 Sq. m. / 4,550 Sq. ft.

**Common Features**

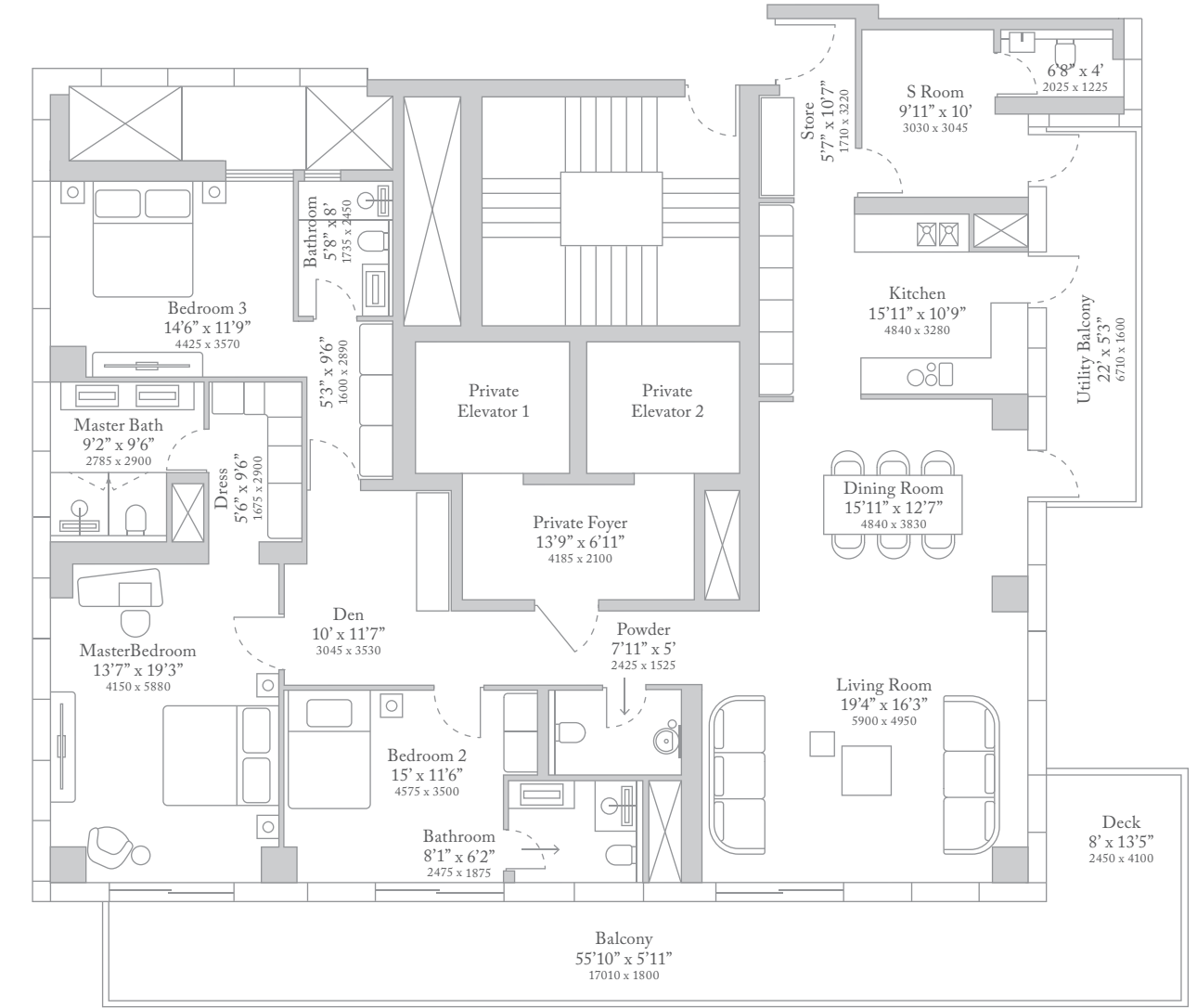
- Superior 3.75m floor to floor height
- Edge to edge curtain glass façade offering clear & fantastic views
- Separate provision for service entry and private entry
- Air conditioned kitchen with covered storage space/laundry area
- Extended balconies with party deck - for lively outdoor experience
- Private areas segregated from living areas

**Unit Features**

- Elevators opening directly into your private entry foyer
- Over 800 sq. ft. of living, dining and entertainment space
- Over 150 sq.ft. of deck with mist cooling
- Private areas segregated from living areas
- Lavish five fixture master bath with floor to ceiling glazing



3BHK



**Carpet Area**  
214.43 Sq. m. / 2,308 Sq. ft.

**Private Usable Area**  
290.24 Sq. m. / 3,124 Sq. ft.

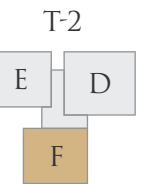
**Super Built Area**  
327.48 Sq. m. / 3,525 Sq. ft.

**Common Features**

- Superior 3.75m floor to floor height
- Edge to edge curtain glass façade offering clear & fantastic views
- Separate provision for service entry and private entry
- Air conditioned kitchen with covered storage space/laundry area
- Extended balconies with party deck - for lively outdoor experience
- Private areas segregated from living areas

**Unit Features**

- Elevators opening directly into your private entry foyer
- Over 600 sq.ft. of living, dining and entertainment space
- Over 100 sq.ft. of deck with mist cooling



# SPECIFICATIONS

Height - Approx. 200 Metres | 3.75 Metre Floor To Floor Height | Triple Height Entrance Lobby | Community Building - Trump Club | Structure - Earthquake Safety Compliant | Air Conditioned Apartment With VRV/VRF | Air Conditioned Lift Lobbies + Entrance Lobby High Speed Passenger Elevators

## CONTEMPORARY RESIDENCES

LOCATION	DESCRIPTION	SPECIFICATION
<b>Living/Dining</b>	Floor	European marble/engineered wooden flooring
	Walls	Acrylic emulsion paint
	Ceiling	Part false ceiling with acrylic emulsion paint
	Main Door	Panelled shutter with biometrics and digital locks
<b>Bedrooms</b>	Floor	Engineered wooden flooring
	Walls	Acrylic emulsion paint
	Ceiling	Part false ceiling with acrylic emulsion paint
	Doors	Panelled shutter (8 feet high)
<b>Kitchen</b>	Floor	European marble
	Walls	Combination of engineered marble/granite/designer tiles and acrylic emulsion
	Counter	Engineered marble/granite
	Appliances	European modular kitchen with hob & chimney, microwave, oven, dishwasher, refrigerator, geyser
	Fitting/Fixtures	CP fittings with double bowl SS sink
	Cooking gas	Provision for piped individually metered natural gas
<b>Balcony</b>	Store	Provision for washing machine
	Floor	Tiled flooring
	Ceiling	Exterior grade paint
<b>Bathrooms</b>	Railing	SS & glass
	Floor	European marble
	Walls	Combination of imported marble, acrylic emulsion and mirror
	Counter	European marble/granite/corian
	Sanitaryware/CP Fittings	5 fixture in master bath, bath tub in master bath in 4BHK units, 4 fixture in master bath in 3BHK units & wall hung WC
	Fitting/Fixtures	Glass shower partition in bathroom and under counter cabinets, exhaust fan, towel rail/rack, toilet paper holder, soap dish
<b>Servant Room</b>	Doors	Panelled shutter (8 feet high)
	Fixtures	High quality/ imported CP and sanitary fittings
	Floor	Vitrified tiles
	Walls	Acrylic emulsion or oil bound distemper
	Toilet	Ceramic tile flooring and cladding

LOCATION	DESCRIPTION	SPECIFICATION
<b>External Glazing</b>		Double glazed units with high performance glass
<b>Lift</b>		Air conditioning through the lift shaft
<b>Lift Lobby</b>	Floor	European marble
	Walls	Combination of marble/stone/veneer and acrylic emulsion
<b>Staircases</b>	Floor	Anti skid tile/stone
	Walls	Oil bound distemper
<b>Fire Fighting System</b>		Sprinklers, smoke detectors and alarm systems as per NBC norms
<b>Plumbing</b>		Corrosion proof cPVC piping for water supply inside bathrooms and kitchens & uPVC pipes for stacks
		Hot water supply through concealed geysers in bathrooms
<b>Electrical</b>		Home automation system
	Fixtures/Fittings	Modular switches, copper wiring, provision for ceiling fans in all rooms and ceiling light fitting in kitchen, bathrooms, balconies and passages
	Power Back-up	100% for apartments
<b>Exterior Finish</b>		Glazing with combination of stone, paint etc.
<b>Security System</b>		Secured gated community with access control at entrances and CCTV for parking area and entrance lobby at ground floor. Smart technology/features for access control.
<b>Basement</b>	Floor	VDF/tremix flooring in the parking
	Walls	Oil bound distemper

## CUSTOMIZABLE RESIDENCES

DESCRIPTION	SPECIFICATION
<b>Lift Lobby</b>	Main door & lobby finishing
<b>Exterior</b>	Exterior facade finishing
<b>Walls</b>	Walls without plaster
<b>Outdoor Unit</b>	VRV/VRF provided

In interest of the product or in case of non-availbilty of material, the developer retains the right to upgrade/change the material to an equivalent or higher specifications as approved by the brand.

\*Contemporary Residences: Finished apartments with above specifications | Customizable Residences: Bareshell apartments

**For Bookings**  
**86044 06044**

